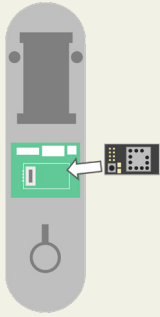


Installation Guide **Connect Module**

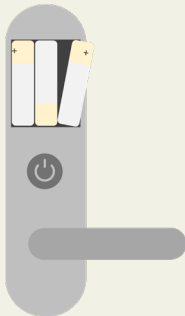


Necessary components: Connect Module, compatible nimly door lock and Connect Gateway from nimly or other supported smart home vendor



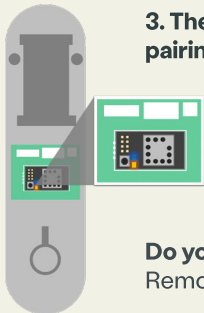
1. Install the module on the circuit board of the inside unit

Do you need to disassemble the lock from your door? Please refer to the installation manual for your door lock, available on our website <https://nimly.io/>



2. Insert all batteries into the lock

Make sure the batteries are installed correctly and verify that the lock is operational



3. The module will automatically enter pairing-mode for four minutes

Pairing-mode is indicated by slow flashing on the blue and orange LED on the module

Do you need to start pairing mode again?
Remove and re-insert the batteries

4. Download our **nimly connect** app or use your preferred supported smart home application

Proceed by installing the application from either App Store or Google Play and **follow** the pairing sequence **provided in the application**

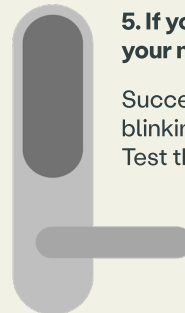


nimly connect

Allows you to operate the lock remotely with advanced functions
*Gateway necessary

Connecting with **another supported smart home vendor?** Follow the steps in their app

Read more about supported smart home vendors, functions, applications and more on our website <https://nimly.io/>



5. If you have followed all steps accordingly, your module should now be connected

Successful pairing is confirmed when the blinking search light turns off.
Test the lock afterwards.